

DECEMBER 2008

**American
Society of
Professional
Estimators**



www.aspenational.com

www.aspechapter3.org

Our Mission

Since 1956 ASPE serves the construction & engineering industries by providing education, training, fellowship and opportunities for professional estimating development..

ORANGE COUNTY CHAPTER #3



President's Message	1
Notes from the President	2
Problem of the Month	2
Biography of the Month	3
Quote of the Month	3
Meeting Information	5
Calendar of Events	6
ASPE Board Members & Committee Contacts	7
Company Listing	8
Joke of the Month	9

**ORANGE SPEEL
NEWSLETTER**



President's Message



ASPE Code of Ethics:

Cannon #1

Professional estimators shall perform services in areas of their discipline and competence.

Cannon #2

Professional estimators shall continue to expand their professional capabilities through continuing education programs to better enable them to serve clients, employers and the industry.

Cannon #3

Professional estimators shall conduct themselves in a manner, which will promote cooperation and good relations among members of our profession and those directly related to our profession.

Cannon #4

Professional estimators shall safeguard and keep in confidence all knowledge of the business affairs and technical procedures of an employer or client.

As I write this month's blog, it is a few days before the Thanksgiving Holiday. It's hard to believe that another year is coming to a close. Where does the time go? It's been three years since I first joined ASPE. I have belonged to other professional organizations, many groups that are large in membership and cater to multiple disciplines. I was looking for something else. I wanted to get involved with estimators because that is what I do for a living. My first year at ASPE, I became a board member and then I became the chapter president. Becoming involved with ASPE, I met new people and have made new friends. Not only have I created a fellowship with other professionals in estimating, I have learned many new aspects about the estimating industry from attending the dinner meetings. I have attended two national conventions, and I look forward to attending the 2009 meeting in St. Louis. I have learned many things at the conventions, which include new trends in estimating, listened to key industrial speakers, and I have gained some new friendships with national members. If you are an estimator, ASPE is a great organization for you.



The first year of my membership, I decided that I needed to get certified. Thanks to Art Quinion I attended his Saturday workshop to find out more about the certification process. It was definitely worthwhile. He does a great job in explaining what is required and gives an excellent overview of the curriculum. Saturday, December 6th Art will be holding a workshop about the certification program. If you are even somewhat interested or curious about the certification process, you should consider signing up. More information is provided below.

In November, we had our first GC Advisory Board meeting. Board Members Gary Casper, Ron Svarc, and Wil and Anita Beukman were there to help out. General Contractors that are involved with building construction and heavy civil were present. Their main consensus was that there are not enough young people that are involved with estimating and that it is difficult to find individuals that are interested in estimating as a profession. We will continue with the GC Advisory Board and our next meeting should be in the first quarter of 2009. The purpose of this GC Board is to get an estimating panel of experts from the top Contractors in Orange County. Their input will supplement our chapter by providing more depth and diversification.



As a follow-up to comments from the GC meeting, one of our goals for 2009 is to reach out to students in construction, introducing them to the field of estimating. We would like to offer a nominal scholarship to a worthy student working towards an engineering or construction management degree. Board member Peter Garan has graciously volunteered to head up this task. If you have any suggestions, feel free to contact Peter.

On December 10th, board member Tom Smithson will be giving a dinner presentation on estimating for plumbing. Tom is the Chief estimator for RCR Mechanical. More information about the meeting is included below.

Everyone in the construction industry are welcome to attend our meetings. If you would like to attend, just sign-up on our website, www.aspechapter3.org.

Dinner meetings are held on the second Wednesday of each month. We meet at the Mezzanine Building at the Newport Gateway Towers, in Irvine (see enclosed map for details). December's meeting is scheduled for Wednesday, December 10th. Social hour starts at 6:00 PM with dinner at 6:30 PM. We finish by 8:30 and parking is complementary. We hope to see you at our next dinner meeting. We also hold a raffle. The winner receives half of the proceeds; the chapter gets the other half.

~ Dan Schottlander, CPE
President, ASPE Orange County Chapter

Notes from the President

Chapter Website

ASPE reservations can be booked on line. Our chapter website is www.ASPEChapter3.org. Monthly newsletters are posted on the site. If you have any questions or ideas on what to include in our website, feel free to contact our Webmaster Paulette Rutlen. The national website is www.ASPENational.org. Be sure to check out both websites for current announcements.

In Summation

Happy Holidays and Merry Christmas. See you at our next meeting on December 10.

Certification Workshop

Chapter 3 is offering a free Certification Review Workshop that will be held on Saturday, December 6th. The workshop will begin at 9:00 am and will last approximately two to three hours. The presentation will concentrate on what to expect from the certification process, reviewing both the technical paper and the four and eight hour exams. You do not have to be examination registered with ASPE national to attend. Becoming a Certified Professional Estimator (CPE) is an excellent opportunity to gain industry recognition. The next testing cycle is scheduled for March 2009. The location for this workshop will be at Earth Tech | AECOM, 21064 Bake Parkway, Suite 200 in Lake Forest. If you are interested in attending, please email Art Quinion at artq@phoenix-planning.com by December 3rd.

Problem of the Month

What is the bar designation for a piece of rebar which is 5/8" in diameter?

- a. #3
- b. #7
- c. #6
- d. #4
- e. #5

See answer on page 9.

Cannon #5

Professional estimators shall conduct themselves with integrity as all times and not knowingly or willingly enter into agreements that violate the laws of the United States of America or of the states in which they practice. They shall establish guidelines for setting forth prices and receiving quotations that are fair and equitable to all parties.

Cannon #6

Professional estimators shall utilize their education, years of experience and acquired skills in the preparation of each estimate or assignment with full commitment to make each estimate or assignment as detailed and accurate as their talents and abilities allow.

Cannon #7

Professional estimators shall not engage in the practice of "bid peddling" as defined by this code. This is a breach of moral and ethical standards, and a member of this society shall not enter into this practice.

Cannon #8

Professional estimators and those in training to be estimators shall not enter into any agreement that may be considered acts of collusion or conspiracy (bid rigging) with the implied or express purpose of defrauding clients. Acts of this type are in direct violation of the Code of Ethics of the American Society of Professional Estimators.

Cannon #9

Professional estimators and those in training to be estimators shall not participate in acts, such as the giving or receiving of gifts, that are intended to be or may be construed as being unlawful acts of bribery.

Biography of the Month



Tom Smithson

Chief Commercial Estimator

RCR Plumbing & Mechanical

Quote of the Month

“ If it keeps up, man will atrophy all his limbs but the push-button finger. ”

~Frank Lloyd Wright,
American Architect

Tom is a Southern California native born in Pomona. He began his plumbing career in 1976 with a union shop in Irvine, CA as a warehouseman and delivery driver. While serving his plumbing apprenticeship he worked in the field and in the office learning installation of plumbing products, estimating, plan check and design. In 1983 he was promoted to Design Manager and was responsible for all project estimating, plumbing design for field installation and plan check drawings for plumbing, firesprinklers, hydronics and methane gas venting systems.

In 1993 he went to work for RCR in the Design Department at their Riverside office. He worked in the Riverside office for nine years before accepting the Design Manager position in the RCR San Marcos Division where he spent the next five and one half years. His responsibilities increased when his Division Manager asked him to begin consulting and value engineering for RCR's San Diego area clients. Tom went back to the RCR Riverside office in September 2007 to accept his present position as Chief Commercial Estimator.

Tom is presently a member the Orange County Chapter of ASPE and began serving as a Committee Chair in September, 2008.



AMERICAN SOCIETY OF PROFESSIONAL ESTIMATORS
Invites you to join the
ORANGE COUNTY CHAPTER'S
next meeting at:

Date: Wednesday, December 10th , 2008

Social Time: 5:30 p.m. - Program & Dinner: 6:30 p.m.

Location: 19800 MacArthur Boulevard, Irvine, CA

The Mezzanine @ Newport Gateway Towers

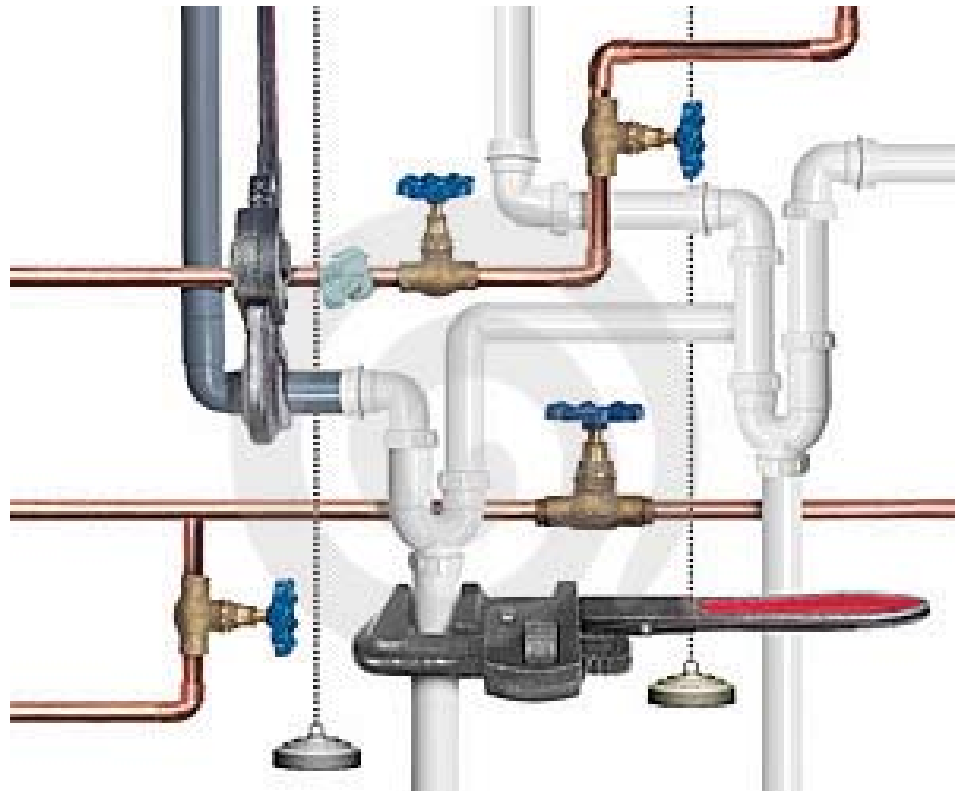
Restaurant is located on the lower level of the Mezzanine Towers



Topic: Estimating for Plumbing

Presented by: Tom Smithson, RCR Plumbing and Mechanical

A brief summary or outline of plumbing estimating procedures from invitation to bid to final estimate and proposal.



For reservations, please go to the website to book your spot at www.aspechapter3.org.
Contact Shantha Suraweera at 949.476.2094 or via email at ssuraweera@ocmi.com if you have any questions.

MEETING INFORMATION



Speaker: Tom Smithson, RCR Plumbing & Mechanical

Date: Wednesday, December 10th , 2008

Social Time: 5:30 p.m. - Program & Dinner: 6:30 p.m.

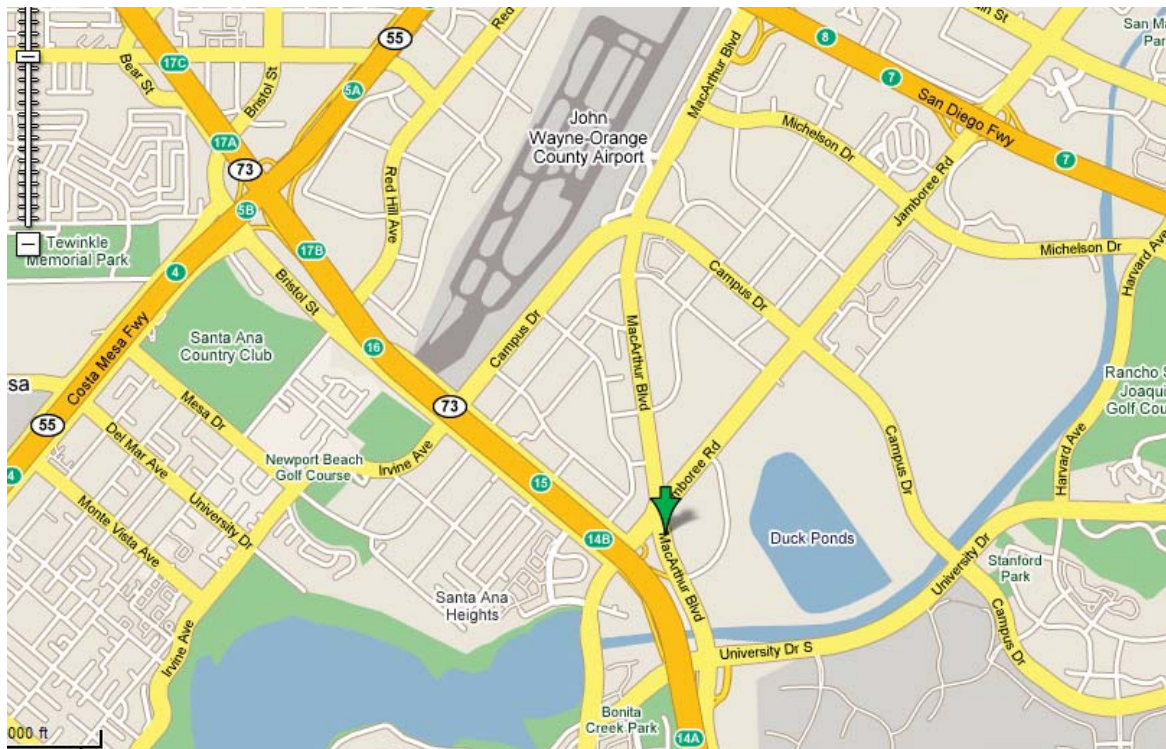
Location: 19800 MacArthur
Boulevard, Irvine, CA

The Mezzanine @ Newport Gateway Towers

Restaurant is located on the lower
level of the Mezzanine Towers

P: 949 724-1066

405 Freeway @ MacArthur Junction
between MacArthur & Fairchild



Dinner:

Steak \$35 | Chicken \$35

Vegetarian Lasagna \$35

For reservations, please go to the website to book your spot at www.aspechapter3.org.
Contact Shantha Suraweera at 949.476.2094 or via email at ssuraweera@ocmi.com if you have any questions.

Calendar of Events

2008-2009

December 6, 2008	Certification Workshop
December 10, 2008	Dinner Meeting - Estimating for Plumbing
January 14, 2009	Dinner Meeting - "Building Technology into Estimates: TECH features that keep you competitive." By James Benham
January 31, 2009	Job site walk
February 11, 2009	Dinner Meeting – Concrete Estimating
March 11, 2009	Dinner Meeting - Electrical Estimating
March 28, 2009	Certification Workshop
April 8, 2009	Dinner Meeting - Estimating Interiors with Steel Studs & Drywall
April 2009	LEED Workshop – (tentative)
May 13, 2009	Dinner Meeting – Mechanical Estimating
May 23, 2009	Estimating Academy
June 10, 2009	Dinner Meeting - 50 Sustainable Building Features in a Gold Rated LEED Residential Home by Travis Taylor
July 9 – 11, 2009	National Convention, St. Louis, MO.
August 2009	Golf Tournament (tentative)

Advertising Opportunities

Advertising Opportunities:

Business Card	Per Issue	\$25.00
¼ Page Ad	Per Issue	\$50.00
½ Page Ad	Per Issue	\$100.00
Full Page Ad	Per Issue	\$200.00

2008-2009 Board Members and Committee Chairs

President	Dan Schottlander, CPE Earth Tech / AECOM	949 330 2299 dan.schottlander@AECOM.com
1st Vice President	Wil Beukman, MRICS Faithful + Gould	willem.beukman@fgould.com
Secretary/Treasurer	Shantha Suraweera, CPE O' Connor Construction Management	949 476 2094 ssuraweera@ocmi.com
Immediate Past President	Ron Svarc, CPE	kickerron@cox.net
Board of Directors	Paulette Rutlen, CPE The Austin Company	949 451 9055 paulette.rutlen@theaustin.com
Board of Directors	John Mauk, CPE O' Connor Construction Management	949 476 2094 jmauk@ocmi.com
Board of Directors	Paul Steele Rayomond Interior Systems	714.771.7670 pauls@raymond-co.com
Chapter Certification Chair/ BOD	Art Quinion, CPE Phoenix Planning	949 581 9370 artq@phoenix-planning.com
Newsletter / BOD	Danielle Leyva HMC Architects	951 317 7691 dleyva@hmcarchitects.com
Membership / Certification Programs	Ron Svarc, Art Quinion Ron Svarc, Mike Mills	
Education	Tom Smithson	
Scholarship	Dan Schottlander, Peter Garan	
Web Site	Paulette Rutlen	
Awards	Gary Casper, Ron Svarc	
Outreach	Ron Svarc	
Fundraising	Anita Beukman, Danielle Leyva	
Publications / PR	Ron Svarc, John Mauk	
Estimating Academy	Dan Schottlander, Wil Beukman, Paul Steele	
GC Advisory Board	Dan Schottlander, Ron Svarc, Gary Casper	

Company Member Representatives

FROM ASPE ORANGE COUNTY CHAPTER

Abacus Project Management Inc.

AGC San Diego Plan Room

American Constructors

Analytical Planning Services, Inc.

Arnulfo Ruiz

Bel Esprit Builders, Inc.

Bert L. Howe & Associates, Inc.

Brussel Consulting and
Construction Management

Casper Estimating Services

Consolidated Contracting Services

Contracting Engineers Inc.

Contractors and Cost Consultants

Corecon Technologies Inc.

DDL Construction

DM Construction Services

Disneyland Resorts

Earth Tech / AECOM

Faithful + Gould

GKK Works

Herzog Contracting Corporation

HMC Architects

Jacobs Engineering

JBH Structural Concrete Inc.

Joshua Don

Kanda Project Services Corporation

Kerry Contractors, Inc.

KFHP Inc.

KGA, Inc.

KHS&S

L&R Construction Inc.

Lennar

Lombard Consulting Services, Inc.

M. Cangro Development

Madsen, Kneppers & Associates

Marlin Construction

Consulting and Associates

O'Connor Construction Management

Pacific Rim Mechanical Contr. Inc.

Pete Fowler Construction Services

Phoenix Planning

Project Control Assoc.

Raymond Interior Systems

RCR Mechanical

Rider Levett Bucknall

Ronald Fedman Associates, Inc.

Rosenthal Masonry

The Austin Company

The Clark Construction Group

Timko, Inc.

Answer to Problem of the Month

E. #5

Joke of the Month

Before going to Europe on business, a man drives his Rolls-Royce to a downtown New York City bank and asks for an immediate loan of \$5,000. The loan officer, taken aback, requests collateral. "Well then, here are the keys to my Rolls-Royce," the man says. The loan officer promptly has the car driven into the bank's underground parking for safe keeping and gives the man the \$5,000. Two weeks later, the man walks through the bank's doors and asks to settle up his loan and get his car back. "That will be \$5,000 in principal, and \$15.40 in interest," the loan officer says. The man writes out a check and starts to walk away. "Wait, sir," the loan officer says. "You are a millionaire. Why in the world would you need to borrow \$5,000?" The man smiles, "Where else could I find a safer place to park my Rolls-Royce in Manhattan for two weeks and pay only \$15.40?"



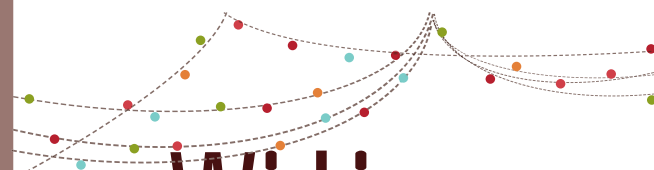
Any Program Ideas?

In order to make our chapter work for everyone we are looking for your ideas and input. What topics would you like to see discussed? What programs would you like? If you are a General Contractor, Subcontractor, Consultant, Architect or Engineer, what topics are you interested in? Any suggestions that you have, we would be appreciated.



Membership

If you are not currently a member, perhaps you may want to consider joining ASPE. Applications for membership can be downloaded off of the National website, www.aspenational.org.



Wishing
Everyone
a
Happy
Holiday!

